

Biohazardous & Biomedical Waste Disposal Guidelines



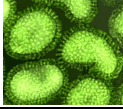
ITEMS REQUIRING DISPOSAL



Human & primate blood, blood products, body fluids, cells, other potentially infectious material (OPIM), & all human pathogens.



All animal & plant pathogens, recombinant/genetically modified organisms, vectors & plasmids.



Label red bags with date, PI name, lab location, and phone number before placing them in biohazard box.

PROPER DISPOSAL METHOD



Autoclave 60-90 min.



A freshly diluted 10% bleach solution is acceptable for some liquids (i.e. blood, body fluids)



30 min



Used labware (tissue culture dishes & flasks, tubes, vials, etc), disposable PPE, & medical devices:

CONTAMINATED
(with any of the items above)

NON-CONTAMINATED
Place in biowaste or clean lab ware box.

Label red bags as above.



Autoclave 60-90 min.



Tape box shut within 30 days of first use & label with date, PI name, lab location & phone number.



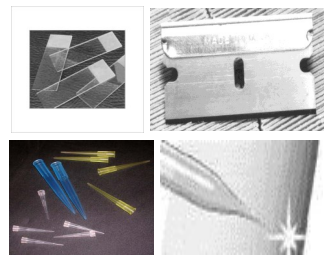
All needles, syringe/needle combinations, scalpels, metal lancets.

DO NOT RECAP NEEDLES!



Close when 3/4 full & label with date, PI name, lab location & phone number.

Autoclave if contaminated material.



Items that can cut skin but are not intended to do so (i.e. glass slides and cover slips, razor blades, pipettes, and pipette tips) must be placed in a secondary container (i.e. sharps container, cardboard box) before going into biohazard box.



Autoclave if contaminated material.



Lab glass, lab plastic and broken glass **NOT CONTAMINATED** with any biological, chemical, or radiological hazards.

Place in clear bag lined sturdy cardboard box.



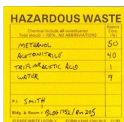
Tape box shut, label as clean lab ware & discard through regular trash.



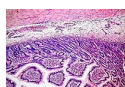
Animal carcasses and tissues → Contact Animal Care Services (273-9230)



Mixed biological/radioactive waste → Contact Radiation Safety (392-7359)



Mixed biological/chemical waste → Contact Biosafety (392-1591) or Hazardous Materials (392-8400)



Human tissue or biological toxins → Contact Biosafety (392-1591)