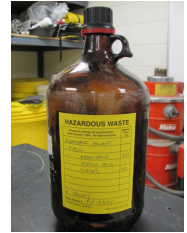


# Hazardous Waste Disposal Guidelines



Waste containing or mixed with any EPA-listed chemical, including original concentration reagents, stock solutions, contaminated solids, or spill cleanup materials

**LABEL AS HAZARDOUS WASTE**

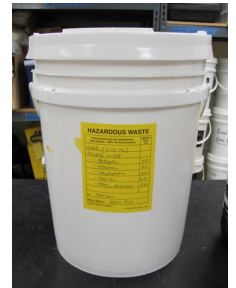


**LIQUID WASTE**



Waste which exhibits any of the four EPA-defined characteristics of ignitability, corrosivity, reactivity, or toxicity

HAZARDOUS WASTE		Quantity
Chemical (include all constituents)		(Liters)
Total amount - 100% by observation		
Methanol		50
Acetonitrile		40
Trifluoroacetic Acid		1
Water		9
P.I. Smith		
Bldg. & Room: Bldg. 1752/Am 205		
PLEASE WRITE LEGIBLY		



**SOLID WASTE**



Waste which is believed to be potentially dangerous or harmful to either people or the environment after reviewing the product's MSDS

- Include all constituents
- Give approximate %'s
- No abbreviations or formulas

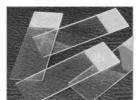


**NON-CONTAMINATED** lab glassware, lab plasticware, clean solids, and sharp glass or plastic materials\* may be placed in the **CLEAN LABWARE** container to be disposed of as "normal" trash.



**PLACE MATERIALS IN RIGID, LINED OUTER BOX**

**DISPOSE OF IN TRASH DUMPSTER\***



\*Metal sharps such as razor blades, scalpel blades, and needles should always be disposed of into a sharps container, even when clean.



\*Workers at the Health Science Center may dispose of Clean Lab Ware by placing their labelled box in the hallway outside the lab. Other locations should deliver their box to their building's dumpster.

**Need more help? The University's Department of Environmental Health and Safety can provide additional assistance with waste determination and disposal; containers and labels for hazardous waste are also provided at no charge. Call **392-8400** for assistance.**